

## HD Operator

Hard-Working Heavy Duty Operators for Larger Spring-Balanced Roller Shutters

**75004A406 (L/R)**

Commercial Door Operators / Roller Shutter Operators / HD Operator

The LiftMaster HD Operator is designed for large spring balanced roller shutters up to 80m<sup>2</sup>. The fan-cooled motor and efficient gearbox combine to offer a robust, durable and long serving product .

### Key Features

- Powerful 2.0Hp motor with purpose designed gearbox for durable, reliable operation
- Automatic chain-engage mechanism for safe and easy manual operation in the absence of power
- Ideal for larger spring-balanced roller shutters up to 80m<sup>2</sup>
- Feature rich GLMe2HS controller
- Rated for high duty cycle (30% run time)

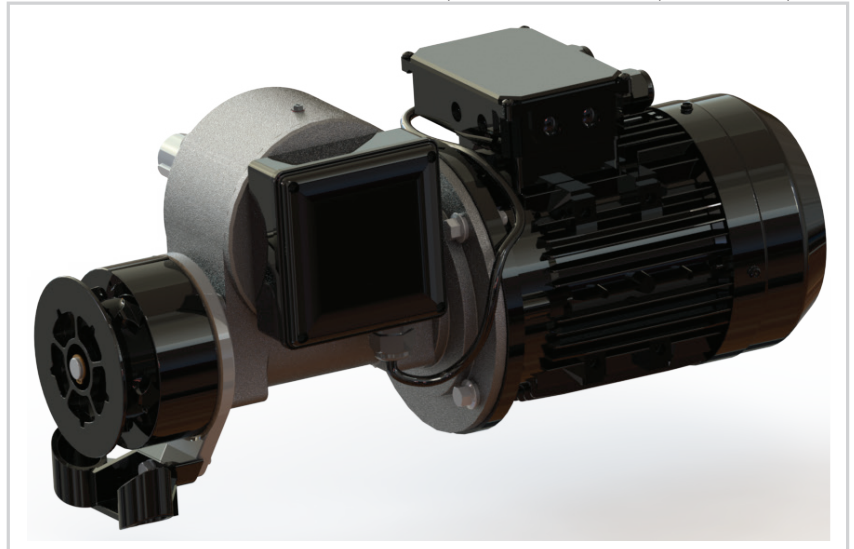
### What's in the Box?

- LiftMaster 2Hp 400V/60Hz HD Operator
- LiftMaster GLMe2HS Logic Controller with:
  - Entrapment Protection Inputs for PE Beams, Bump Edge, Light Curtain
  - On-board receiver for Remote Control
  - Auto Timer-to-Close
  - Toggle Input for external control devices
  - 24vdc accessory power
  - Optional Expansion Board available for advanced functionality

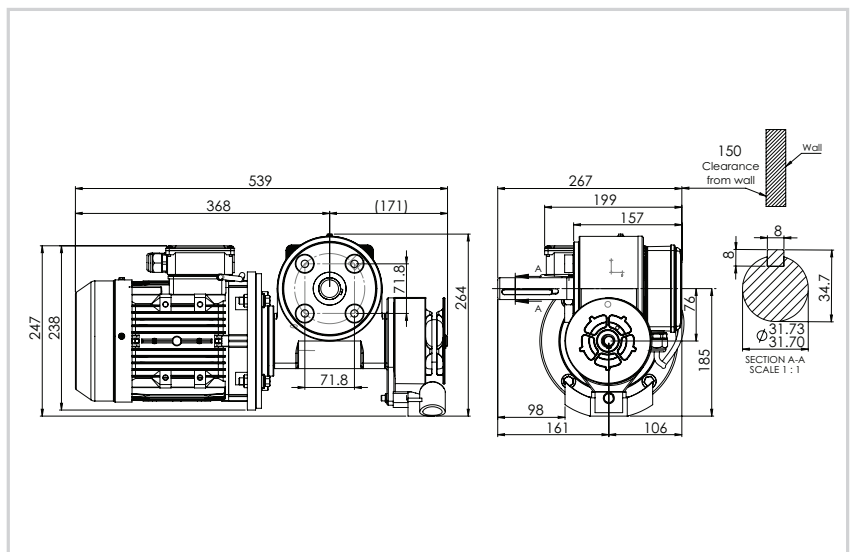
### Information for Roller Shutters

The LiftMaster HD Operator is rated based on the following parameters;

- The roller shutter is correctly spring balanced
- The drum dia is  $\leq 210$ mm
- The curtain weight is  $\leq 15$ Kg/m<sup>2</sup>
- The curtain has no windlocks
- If windlocks are fitted the maximum door area should be reduced by approx. 15% to compensate for windlock friction
- The sprocket drive ratio is  $\geq 4:1$  (higher reduction is recommended where windlocks are used)



Product may differ slightly from image shown.



Product may differ slightly from image shown.

### Model Details

Part No.	75004A406 (L/R)
Description	HD75 2.0Hp 3Ph, 400V 60Hz

(L/R) indicates which side of the door opening the motor is mounted to (when viewed from inside the building). For example a model with an "L" suffix is mounted to the top left of the door opening.

### Specifications

kW	1.57kW	Phase	3ph
Amps	2.8A	Max SB Door Size	80m <sup>2</sup>
Voltage	380-400V@60Hz	Duty Cycle	HC
Hp	2.0Hp		